



For Immediate Release

e-con Systems Inc.
+1408-625-7267
sales@e-consystems.com

St. Louis, USA/Chennai, India, December 1st 2008:

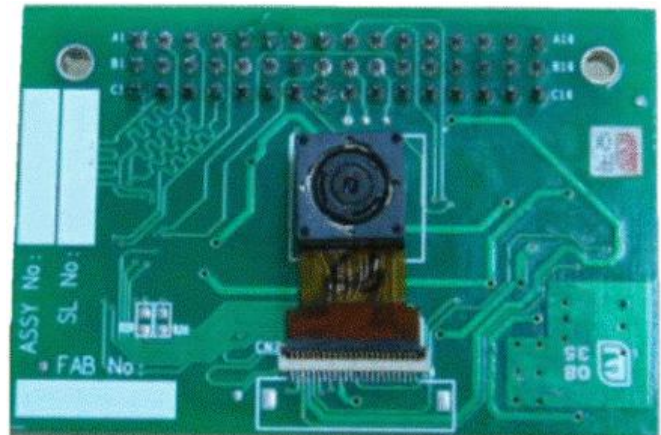
e-con Systems announces e-CAM's availability with 3.2 Megapixel CMOS image sensor

Adding to its existing line of Camera Solutions, e-con Systems a leading product development services company based out of St Louis, USA & Chennai, India announced the availability of 3 Mega pixel camera sensor with e-CAM – the widely known Plug and Play camera solution for embedded platforms.

The 3 Mega pixel camera module is based on Omnivision OV3640 sensor. Capturing pictures at low light conditions require longer exposure times and hence there could be problems in holding the camera still. OV3640 is a CMOS image sensor module that has an image stabilization feature which solves this issue and hence makes it very much suitable for capturing pictures at very low light and variable light conditions. In addition, the module consumes very low power and supports very good power management features. The current 3M pixel e-CAM shall support a fixed focus camera and has plans to upgrade it to autofocus later.

e-con feels that this reference design using the 3 MP camera sensor can speed up the time to market and reduce the total cost of ownership. Interested customers can purchase the evaluation kit with the following

1. Schematics for the e-CAM board with 3 Mega pixel camera module
2. Windows CE camera driver with or without directshow support
3. Linux camera driver with Video for Linux support
4. e-CAM daughter boards for PXA270, PXA320, i.MX31 and AU1250
5. Applications for Video capture, still image capture, etc.



Earlier, e-con had announced support for 1.3 Mega pixel sensor and [2 Mega pixel autofocus sensor](#) along with e-CAM. More information on e-CAM can be got [here](#).

About e-CAM

e-CAM is a daughter board that plugs in to the standard 24 pin CMOS sensor interface of the Microprocessor. Further, e-CAM can be used with all processors that support high speed CMOS YUV/RGB interface. Customers in the past have licensed the complete software stack from e-con and have used it in their designs. This speeds up the time to market and also reduces overall development cost. The applications where the e-CAM has been put in to use include have been still capture, facial recognition and 1D/2D bar code capture.